

# FOLDING@HOME

[HTTP://FOLDING.STANFORD.EDU/](http://folding.stanford.edu/)

## HOW TO USE MULTI-GPU CLIENTS RUN IN A PC ?

By Ryan chiu

# Loopback preparation

- 1. three 68  $\Omega$  resistors
- 2. DVI to D-sub adaptor



Three resistors put in DVI adaptor holes.

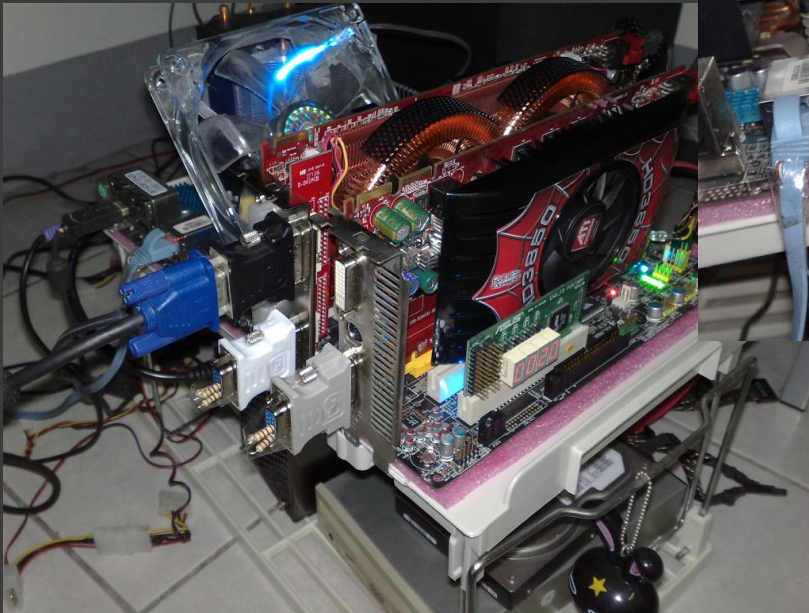


Use tape seal to fix the resistors for fear of coming off.



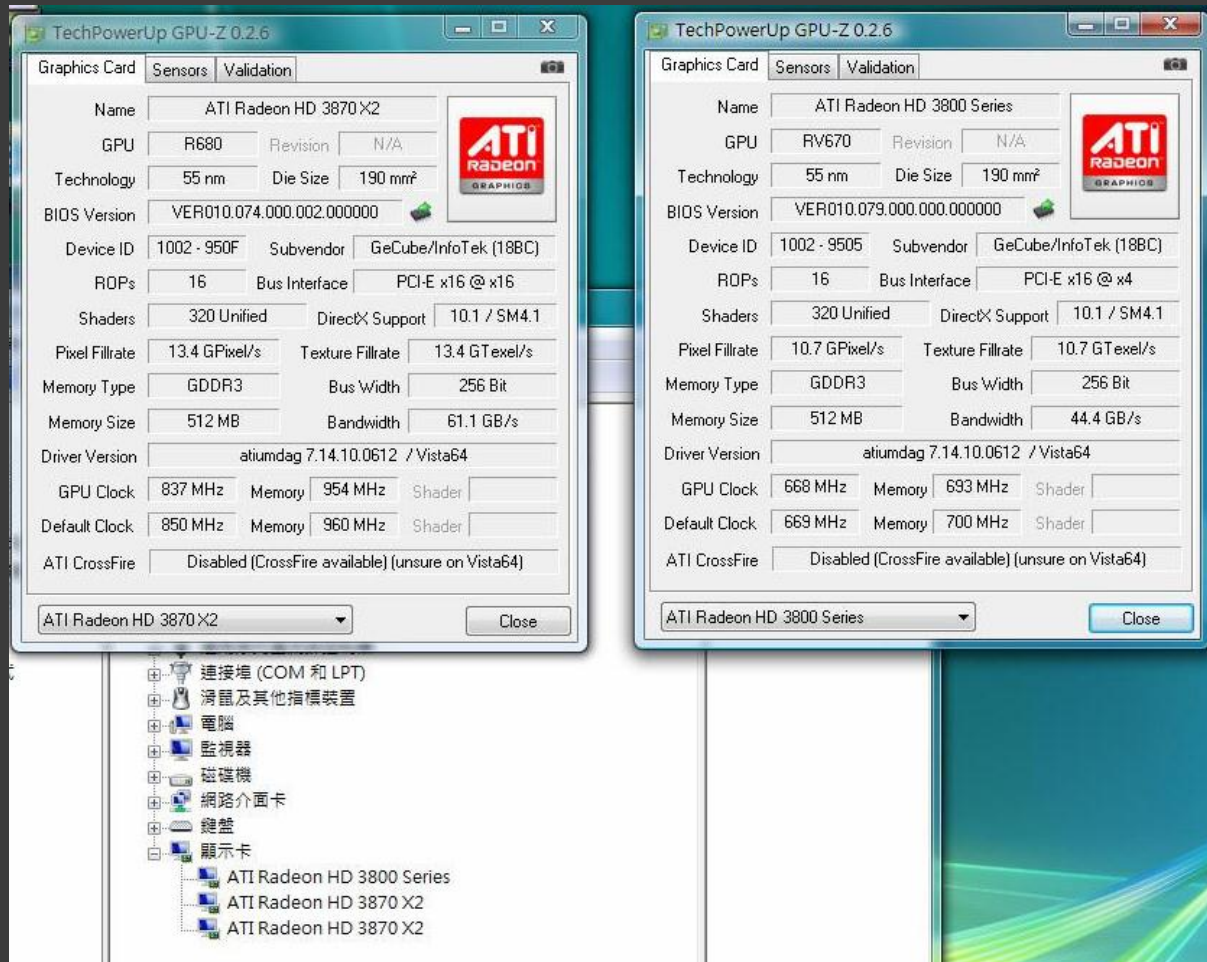


Connect VGA to adaptor except for linked monitor.



# ATI VGA demonstration

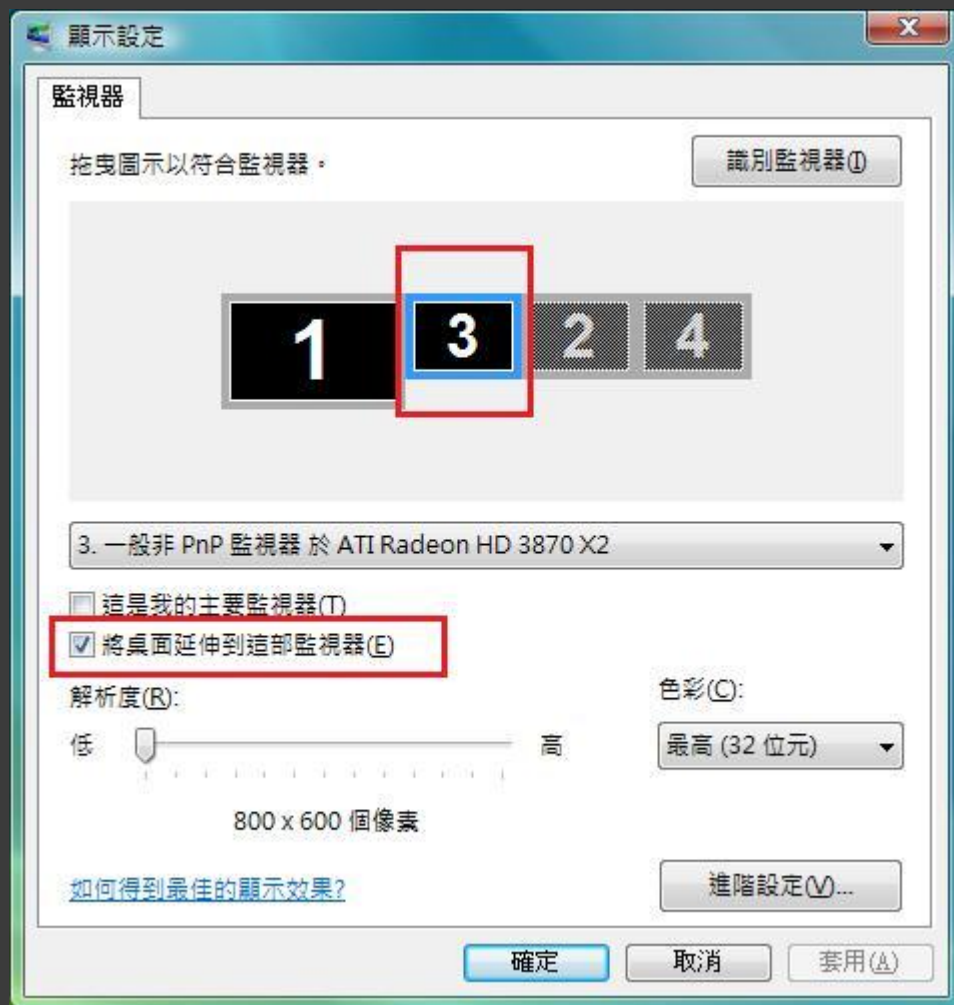
## Confirm all VGA drivers are installed.



# Disable the CrossfireX function.

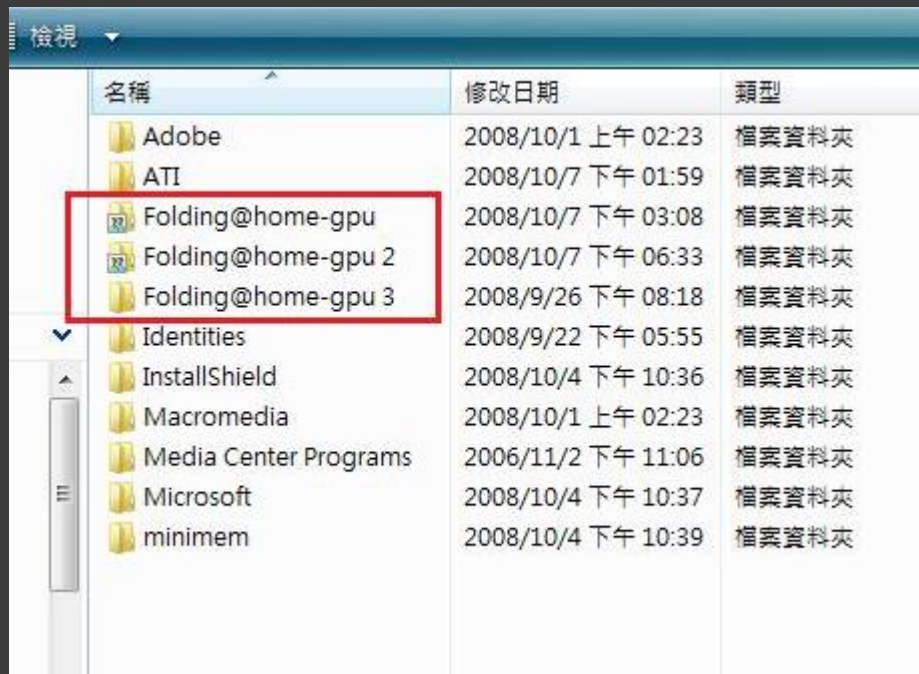


# Enable all extend screens.





# Copy three folding@home folders for three GPU.

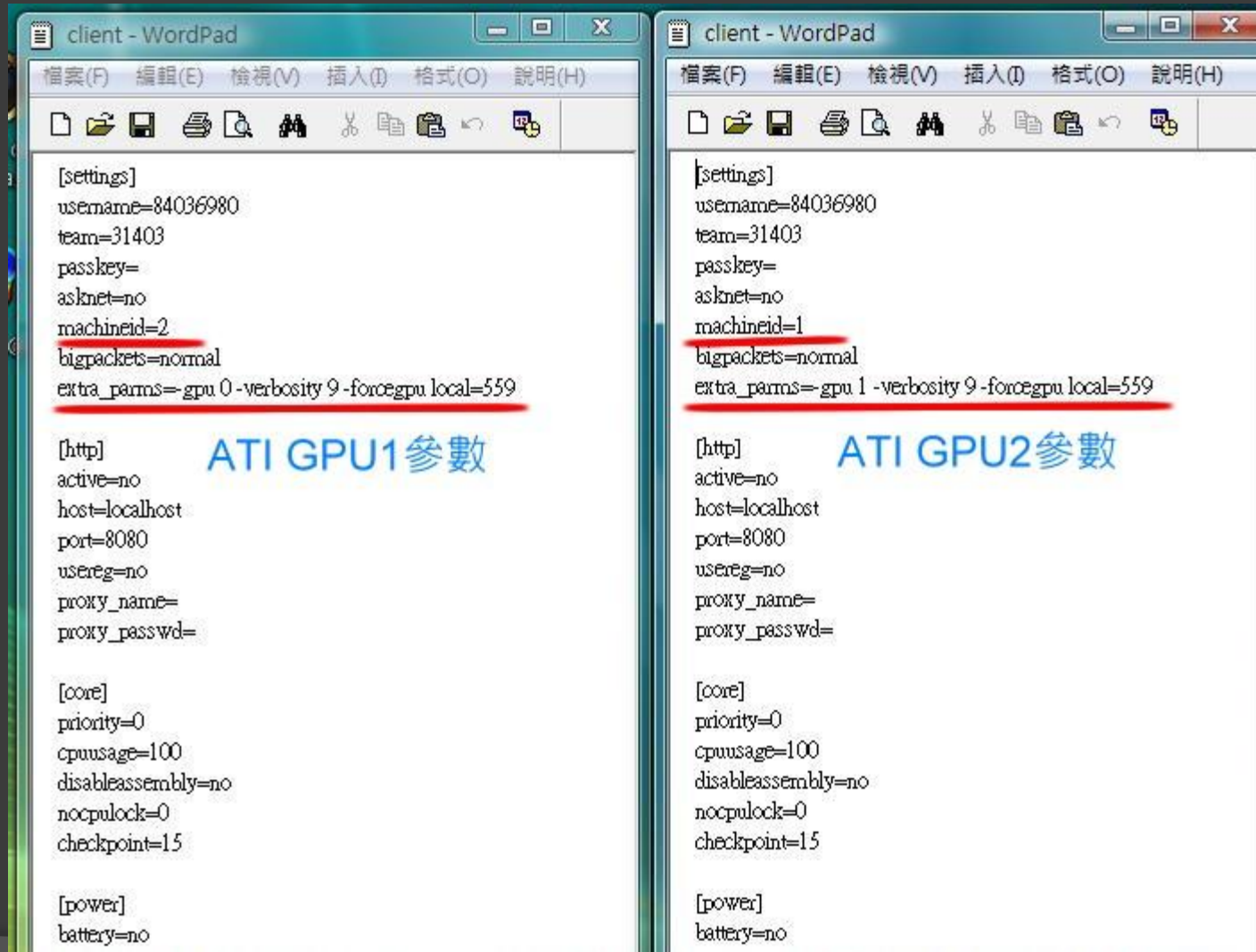


# Delete all files except for red circle files.

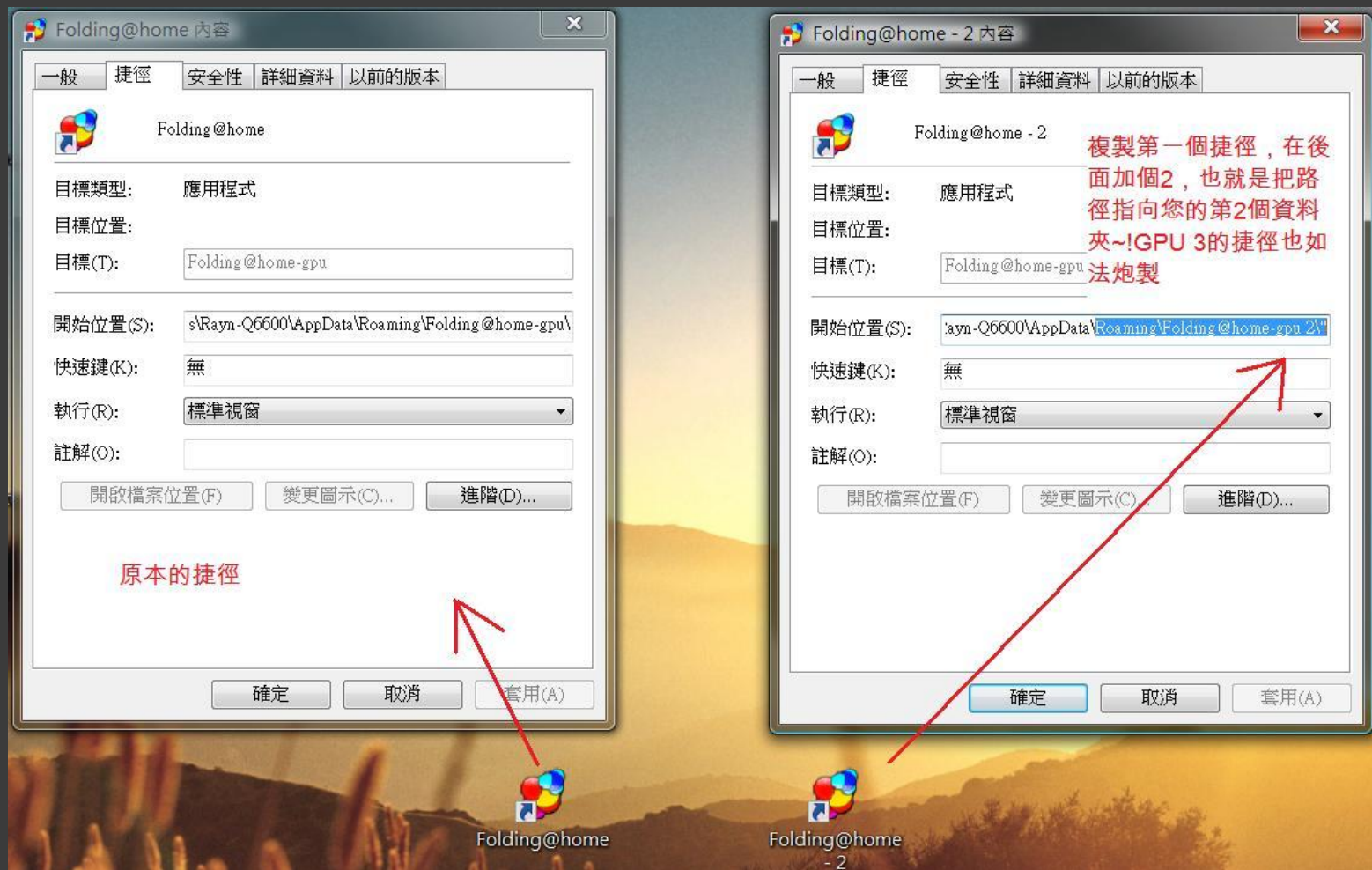
名稱	修改日期	類型
work	2008/10/8 下午 10:...	檔案資料夾
amdcalcl.dll		
amdcalrt.dll		
client.cfg		
cudart.dll		
FahCore_11.exe	2008/9/30 下午 02:...	應用程式
FAHlog.txt	2008/10/8 下午 10:...	文字文件
MyFolding.html	2008/10/7 下午 02:...	Firefox Document
queue.dat	2008/10/8 下午 10:...	DAT 檔案
unitinfo.txt	2008/10/8 下午 10:...	文字文件

只留這4個檔~其他都不用留

1. Use WordPad to open the client.cfg
2. Edit parameter is as below.



# Create folding@home shortcut to desktop divided to two different folders.

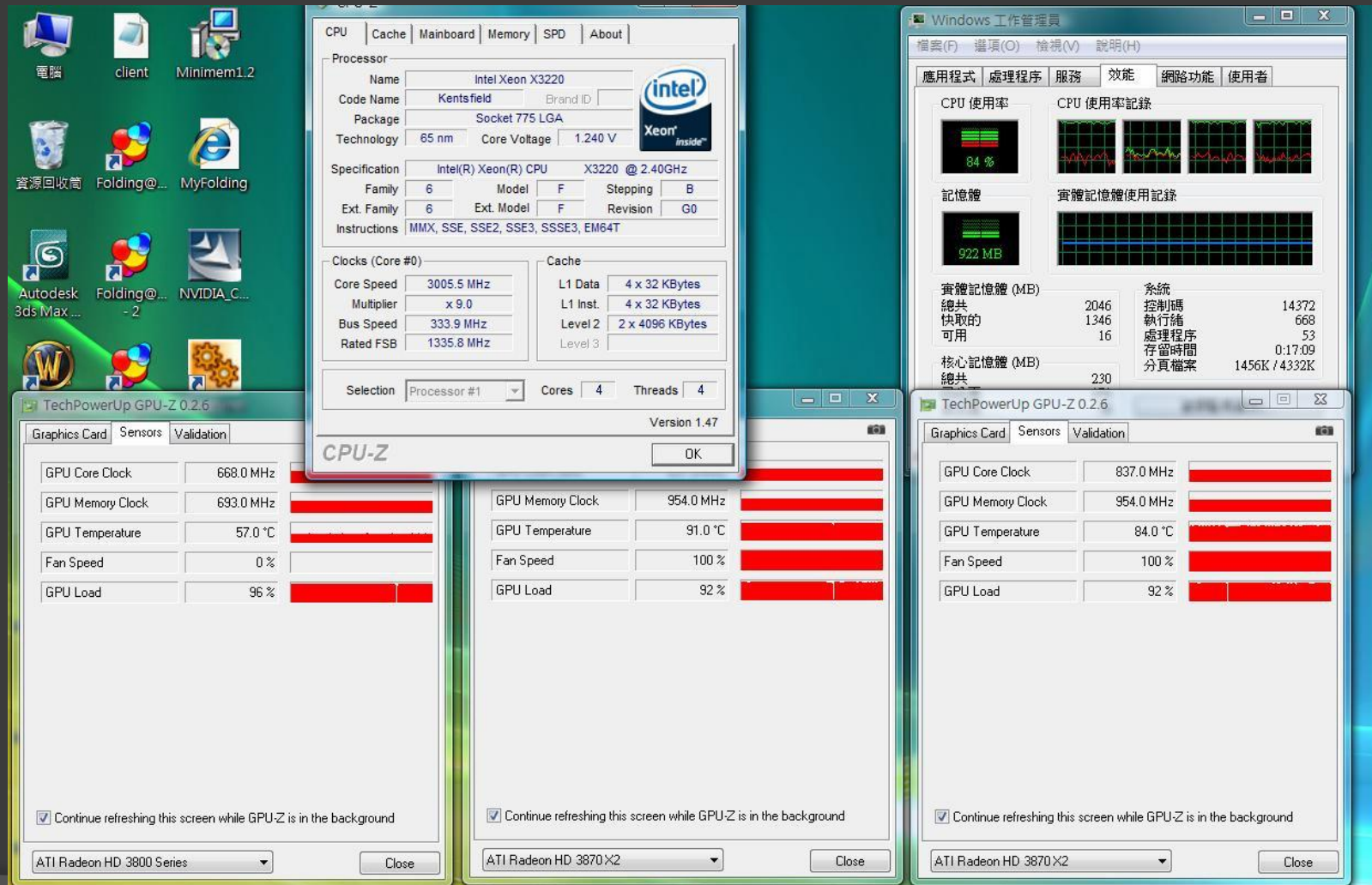


After running three folding@home to make sure every status.





# To make sure every status details for temperature control.



# nVidia VGA demonstration.

The platform uses two 8800GT and one 8800GTX in windows XP OS.

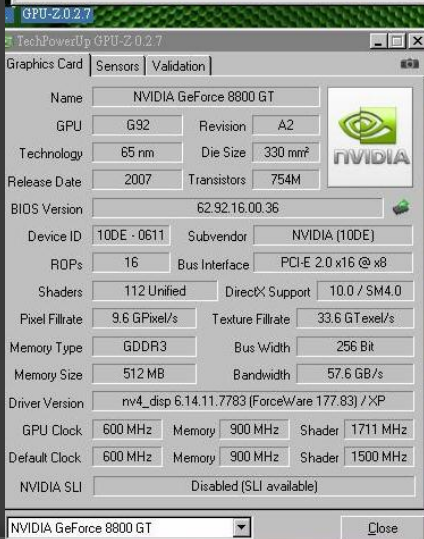
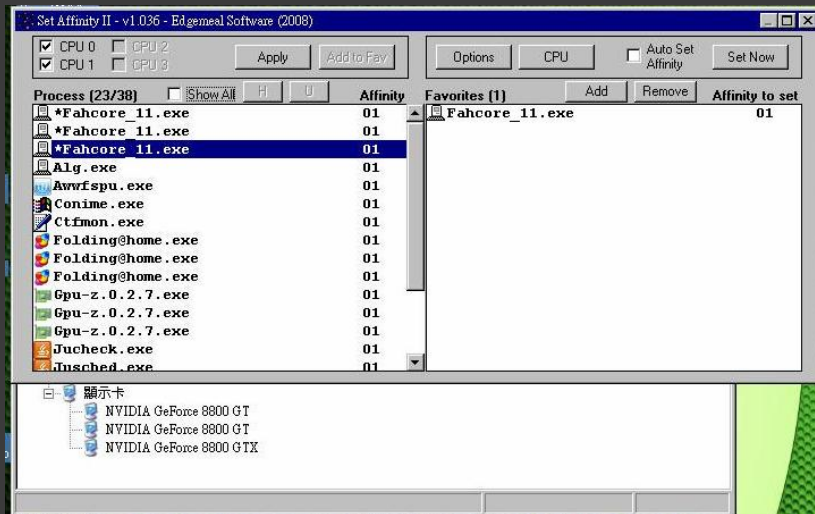




Use 12cm fan to cool down GPU temperature.

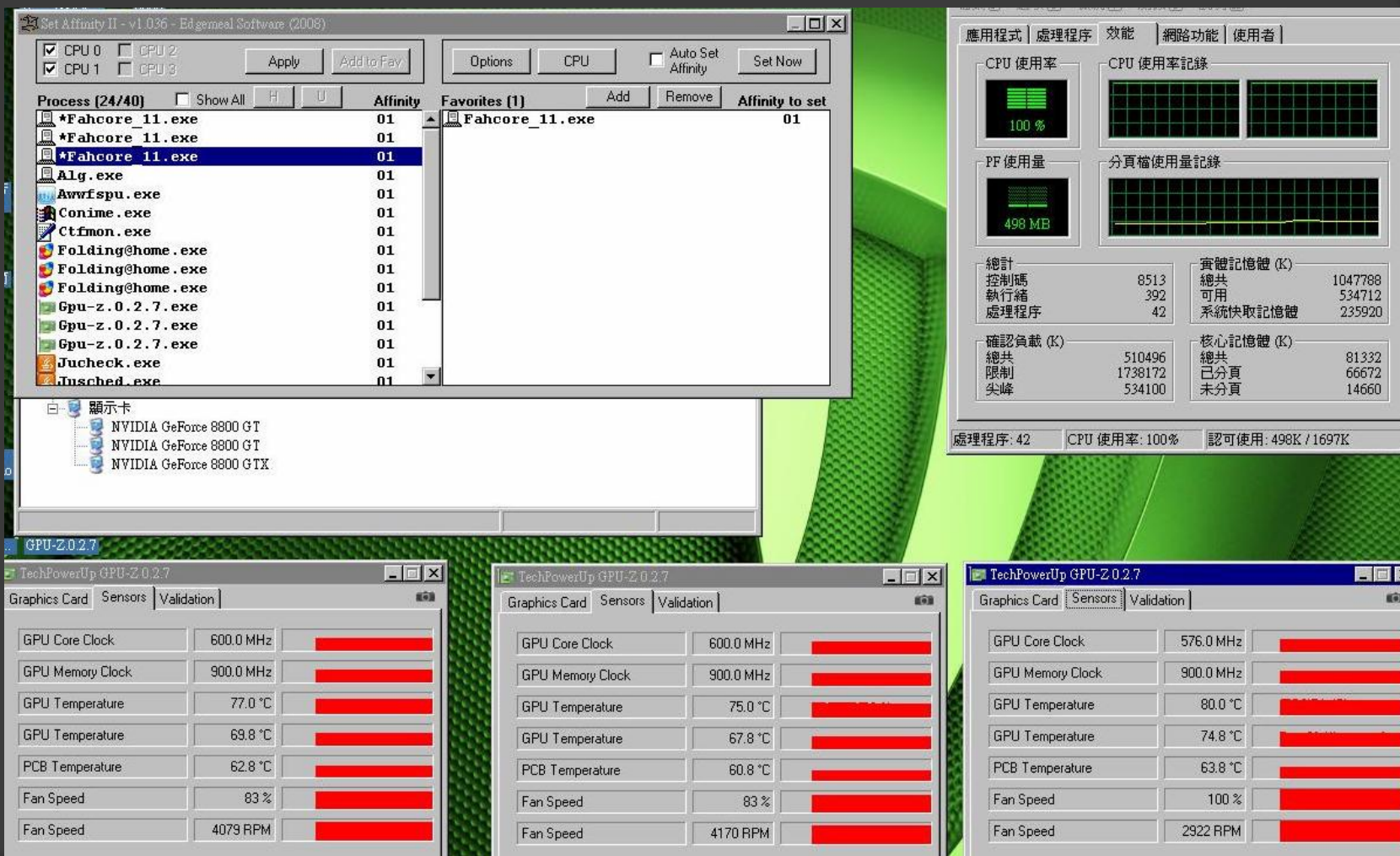


# Use Set Affinity II to control three folding@home CPU connections.



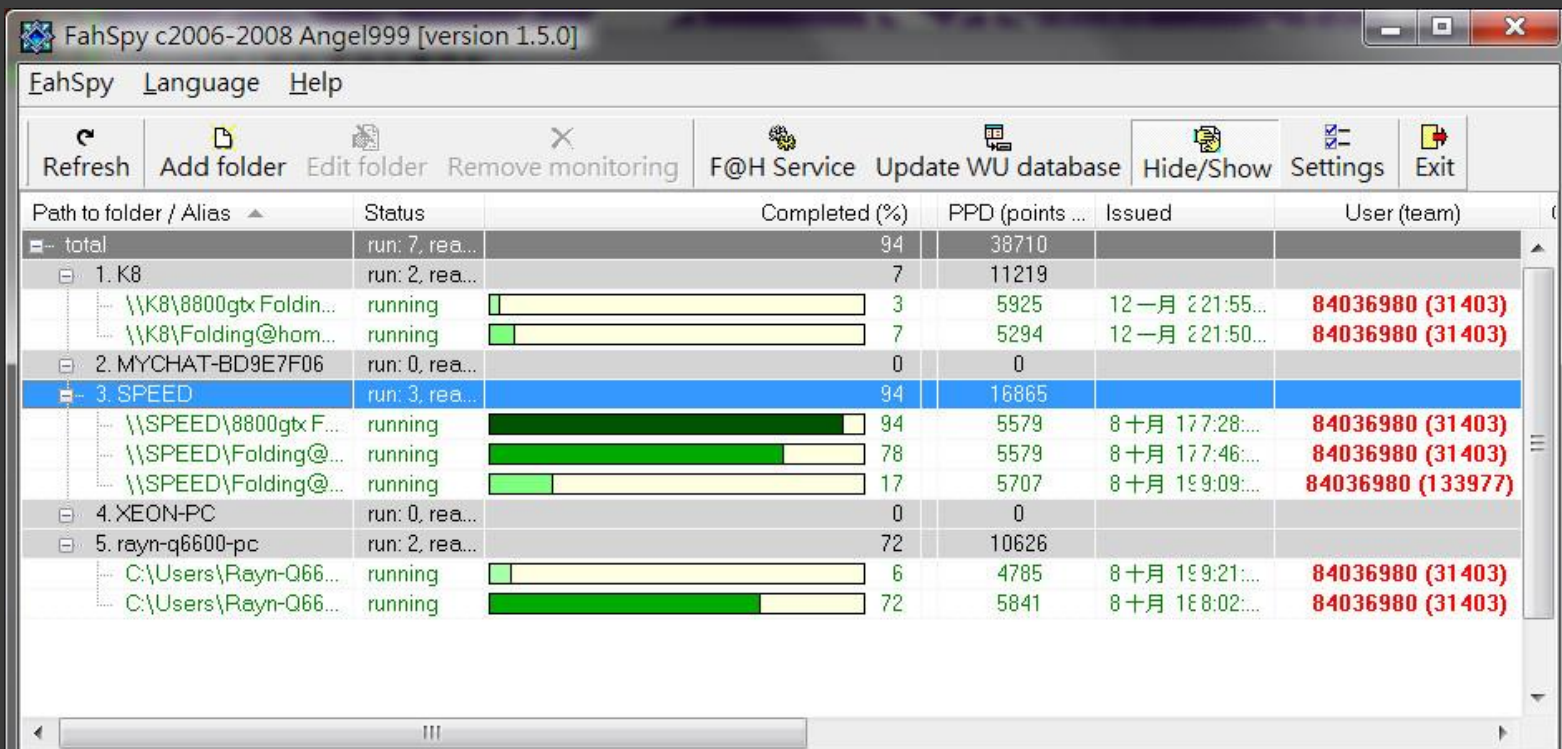


# Monitor every GPU loading status.





My ID is 84036980 for folding@home.  
I use night graphic cards and gain 38710 PPD(Points per day).



FahSpy c2006-2008 Angel999 [version 1.5.0]

FahSpy Language Help

Refresh Add folder Edit folder Remove monitoring F@H Service Update WU database Hide/Show Settings Exit

Path to folder / Alias	Status	Completed (%)	PPD (points ...)	Issued	User (team)
total	run: 7, rea...	94	38710		
1. K8	run: 2, rea...	7	11219		
\\K8\8800gtx Foldin...	running	3	5925	12一月 221:55...	84036980 (31403)
\\K8\Folding@hom...	running	7	5294	12一月 221:50...	84036980 (31403)
2. MYCHAT-BD9E7F06	run: 0, rea...	0	0		
3. SPEED	run: 3, rea...	94	16865		
\\SPEED\8800gtx F...	running	94	5579	8十月 177:28...	84036980 (31403)
\\SPEED\Folding@...	running	78	5579	8十月 177:46...	84036980 (31403)
\\SPEED\Folding@...	running	17	5707	8十月 199:09...	84036980 (133977)
4. XEON-PC	run: 0, rea...	0	0		
5. rayn-q6600-pc	run: 2, rea...	72	10626		
C:\Users\Rayn-Q66...	running	6	4785	8十月 199:21...	84036980 (31403)
C:\Users\Rayn-Q66...	running	72	5841	8十月 198:02...	84036980 (31403)

# This is my certification of folding@home.

<http://fah-web.stanford.edu/cgi-bin/main.py?qtype=userpage&username=84036980>

**Folding@home** Distributed Computing




*This certifies that*  
**84036980**  
*has folded 2,500 workunits*

Given on this 13th day of June, 2010

*Vijay Pande*  
Vijay S. Pande  
Departments of Chemistry and  
of Structural Biology

**Folding@home** Distributed Computing



*This certifies that*  
**84036980**  
*completed 1,100,000 points*

Given on this 13th day of June, 2010

*Vijay Pande*  
Vijay S. Pande  
Departments of Chemistry and  
of Structural Biology

# THE END

- For more information please visit the website :  
<http://forum.coolaler.com/showthread.php?t=191766>